

SAN FRANCISCO BAY AREA JEWISH GENEALOGICAL SOCIETY NEWSLETTER

c/o Pete Tannen, 289 States St., San Francisco CA 94114

Volume 1 Number 5

edited by Pete Tannen

May, 1982

OFFICERS AND BOARD MEMBERS

President:	Carolyn Sherfy	521-8593 (Alameda)	Recording Sec:	Madge Perkel	857-9185 (Palo Alto)
Vice President:	Martha Wise	564-9927 (San Francisco)	Corresp. Sec.:	Pete Tannen	861-4045 (San Francisco)
Treasurer:	Pat Futoran	435-1713 (Tiburon)	Member at Large:	Ann Krumholz	345-5571 (San Mateo)

JUNE MEETING

DATE: TUESDAY JUNE 8, 1982
PLACE: CALIFORNIA FED. SAVINGS & LOAN COMMUNITY ROOM
1900 NORIEGA (at 26th Avenue), SAN FRANCISCO
(use door on left and go upstairs)

TIME: 7:00 PM for question & answer period
7:30 PM for formal program

Carol Harless, a teacher of genealogy and genealogical researcher will speak on U.S. SOURCES FOR IMMIGRANT ORIGINS SEARCH. This talk will include information about immigration records, ships passenger lists, naturalization papers, etc., and how and where to find these documents. Ms. Harless, a resident of Los Altos, has taught genealogy at the LDS Sunday School for seven years and is an adult education instructor for several schools on the Peninsula. Be sure to attend this informative talk and bring your questions about immigration.

PAST MEETING

Twenty people attended our April meeting, including many first-timers, to whom we would like to extend a special welcome to our Society. We hope to see you all at our future meetings. Our program for the evening, on Genealogical Record Keeping and Organization, was presented by our Treasurer, Pat Futoran. Pat's talk included information on how to organize your research information by using files, note books, a Family History Book, ancestral charts, family group sheets, research logs, document extraction sheets, looseleaf binders, and card files. The organization of standard five-generation ancestral charts was explained, including the numbering system used to provide continuity from one chart to the next. A highlight of this most interesting talk was the large framed hand-drawn charts which Pat had made for her family, which included photographs of family members. One of these charts was semi-circular and included both Pat's and her husband's families, complete with a photo montage. Pat also talked about general research hints: never throwing out any research information, the use of a family history questionnaire to request information from relatives (which includes a pedigree chart to simplify and encourage a response), keeping a small duplicate notebook to take with you when doing research, how to obtain naturalization records, using the Mormon Library, obtaining photographs of ships that brought our ancestors to the U.S., and obtaining European maps. A ten page handout which included examples of the documents that Pat talked about was passed out to those in attendance. A limited number of these handouts will be available at our next meeting for those of you who were unable to attend our April meeting.

In addition to Pat's talk, Norman Coliver, one of our members, showed us one of his family charts, which included a great deal of information about each family member, and was spread out horizontally over several sheets of paper. Other business included announcements of the Summer Seminar in Jewish Genealogy in Washington (see article below), the recently discovered Russian Consular Records (see article below), our current membership of 37 paid members, and introduction of all present (including mention of areas of genealogical interest and family names being researched).

ELECTION TIME APPROACHES

Please run for office!

Our Society's year begins in August and election time is rapidly approaching. Please let any one of the officers know if you would like to run for office - we NEED volunteers to run for ALL positions: President, Vice-President, Treasurer, Recording Secretary, Corresponding Secretary, Membership Chair, Program Chair, and Board Members. All members who have paid their dues for 1982 will receive a ballot with the July newsletter. This ballot should be mailed in before the August meeting, at which time the election results will be announced. Further election information will be available at our June meeting, and nominations for office will be accepted at that time.

SECOND SUMMER SEMINAR ON JEWISH GENEALOGY

The SUMMER SEMINAR IN JEWISH GENEALOGY II, sponsored by the Jewish Genealogy Society of Greater Washington will take place from July 11 through 14 in Washington, D.C. Highlights of the Seminar will include visits to the National Archives (passenger arrival records, federal censuses, selected naturalization papers, captured WWII German military documents, and WWI alien registration files), Library of Congress (Hebraic Section, Geography and Map Division, Local History and Genealogy Section, and the European Reading Room), National Genealogical Society Library, National Records in Suitland, MD (recently discovered Russian Consular Records - see separate article below), National Genealogical Society Library, and the Daughters of the American Revolution Library (Southern and rural U.S. vital records), Maryland State Hall of Records at Annapolis (Baltimore vital records), and a tour of places of Jewish interest in Washington. The registration fee for the Seminar is \$35. Accommodations have been arranged at the Capital Holiday Inn at only \$22.50 per person (double room). If you haven't received the Jewish Genealogy Society of Greater Washington's Special issue of their newsletter, Mishpacha, with further Seminar details and registration form, send your request to Jewish Genealogy Society of Greater Washington, c/o Naomi Gershan, 3305 Macomb Street NW, Washington, D.C. 20008. If you signed your name on a list at our last meeting to request this special issue of Mishpacha, it will be given to you at our June meeting by Pete Tannen. If your name was on this list and you can't attend the June meeting, call Pete to receive your copy.

RUSSIAN CONSULAR RECORDS DISCOVERED IN WASHINGTON AND AT STANFORD

Editor's introduction (from Spring 1982 Issue of Mishpacha): What may turn out to be the greatest cache of Russian-Jewish genealogical material ever assembled in one place has been discovered sitting in storage at the National Records Center, Suitland, Maryland. Two thousand boxes, containing about one quarter of a million files were uncovered last December by Zachary Baker, formerly of YIVO and now librarian at the Jewish Public Library in Montreal, Canada. Zach called Rabbi Malcolm Stern; Rabbi Stern called Sallyann Sack. Since then, a committee of volunteers from the Washington Society has been hard at work. . . .

At the request of the Jewish Genealogy Society of Greater Washington, D.C., Madge Perkel and Patricia Futoran are researching records of the Russian Embassy, Breslau and the Polish Embassy, New York, at the Hoover Institute at Stanford University. Some visa applications for Jews living in Breslau and requesting permission to visit relatives in Russia have been located, along with a list of Polish Prisoners (mostly Jews) interned in Shanghai by the Japanese Government. An 81 page list of Jews from the Warsaw Ghetto was located in the files of the Polish Consulate, Portugal, along with a list of Polish Nationals, mostly Jews, who were living abroad, and whose Polish citizenship was taken from them. This list contains the persons' date and place of birth. Unfortunately, much of this information is in Polish, Russian, and French, which is beyond the scope of the researchers. If there is anyone familiar with these languages who might be willing to spend a few hours looking over these files, we would certainly appreciate it. The archives are open Monday-Friday from 8:15AM to 4:15PM. For more information, please call Madge Perkel (857-9185) or Pat Futoran (435-1713). . . . Pat Futoran

NOTES FROM HEAR AND THERE

Two items from Spring 1982 issue of Mishpacha (Jewish Genealogy Society of Greater Washington):

Applications for passports less than 75 years old are stored at the Washington National Records Center. Information from these files can be obtained for a minimum \$8 fee. Write to the Washington National Records Center and include names, dates and places of birth, travel dates, passport number and date (if possible), written consent of the passport applicant or proof of death of the applicant, and your relationship to applicant. Information available might include: name, place and date of birth, brief description, evidence of citizenship, destination, ship, photograph.

The National Archives has changed its policy on requests for ship arrival records. Now each request must be accompanied by a \$5 fee, which is refundable if the record is not found.

The Spring 1982 issue of Roots-Key (Los Angeles Jewish Genealogical Society) contains the recently compiled "Los Angeles Union List of Memorial Books", which is a 13 page list of the Memorial Books that are in the collections of UCLA, the L.A. branch of the Hebrew Union College, the L.A. Jewish Community Library, and the Library of Yeshiva University in Los Angeles. This list could be very valuable to our members who will be traveling to the L.A. Area. This list will be passed around at our meetings in our binder of newsletters from other societies.

NEWSLETTER NOTE

"Last complimentary newsletter" written on your label means that this is the LAST complimentary newsletter that you will receive, unless you send us your annual membership dues of \$10.

THE SAN FRANCISCO BAY AREA JEWISH GENEALOGICAL SOCIETY AND
PENINSULA TEMPLE SHOLOM PRESENT

STEVEN W. SIEGEL, Editor of TOLEDOT -- The Journal of Jewish Genealogy

DATE: MONDAY, JUNE 28, 1982

TIME: 7:30 PM

PLACE: PENINSULA TEMPLE SHOLOM, 1655 Sebastian Dr., Burlingame

This special meeting, which is in addition to our regular meeting on June 8, will be an opportunity to meet Steve Siegel, a noted Jewish Genealogist. Mr. Siegel, an archivist by profession, is an officer and a founder of the Jewish Genealogical Society of New York, as well as an officer of several other Jewish groups in New York City. He will speak to us about Jewish Genealogical Resources and Research in New York City and answer general questions about Jewish Genealogy. Be sure to mark June 28, the date of our Special Meeting on your calendar, so you will not miss this event. For further information, call Pete Tannen at 861-4045, days or evenings.

DIRECTIONS: From I-280, take the Trousdale Dr. Exit and go two blocks down Trousdale. Turn right on Sebastian Drive. The Temple is 2 blocks on the right. From US-101 (Bayshore Fwy), take the Millbrae Ave. Exit and go three blocks to El Camino Real. Turn left on El Camino and turn right in two blocks on Trousdale Dr. Turn left on Sebastian Drive, the sixth street on the left.

If you are not currently receiving the newsletter of the San Francisco Bay Area Jewish Genealogical Society and would like to, write or call Pete Tannen (289 States St., San Francisco, CA 94114, 861-4045). We will send you our next three issues on a complimentary basis. Upon joining the Society (\$10

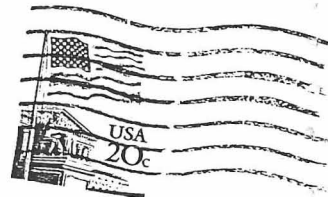
A message from your President:

ATTENTION: ALL MEMBERS !!

Your society needs your skills. Please consider running for an office or board position. No experience necessary. Call any officer to discuss duties or responsibilities of the position you would not mind investigating. The jobs are not much work, but a lot of fun and togetherness is shared at the same time providing a valuable service which is extremely rewarding. Help us to grow and organize a worthwhile alliance among those interested in Jewish Genealogy here in the San Francisco Bay Area. Give me a call today
521-8593.

Sincerely,
Carolyn Sherfy

CAROLYN L. SHERFY
918 WILLOW
ALAMEDA, CA 94501



MRS WARREN WISE
1990 20TH AVE
SAN FRANCISCO CA 94116